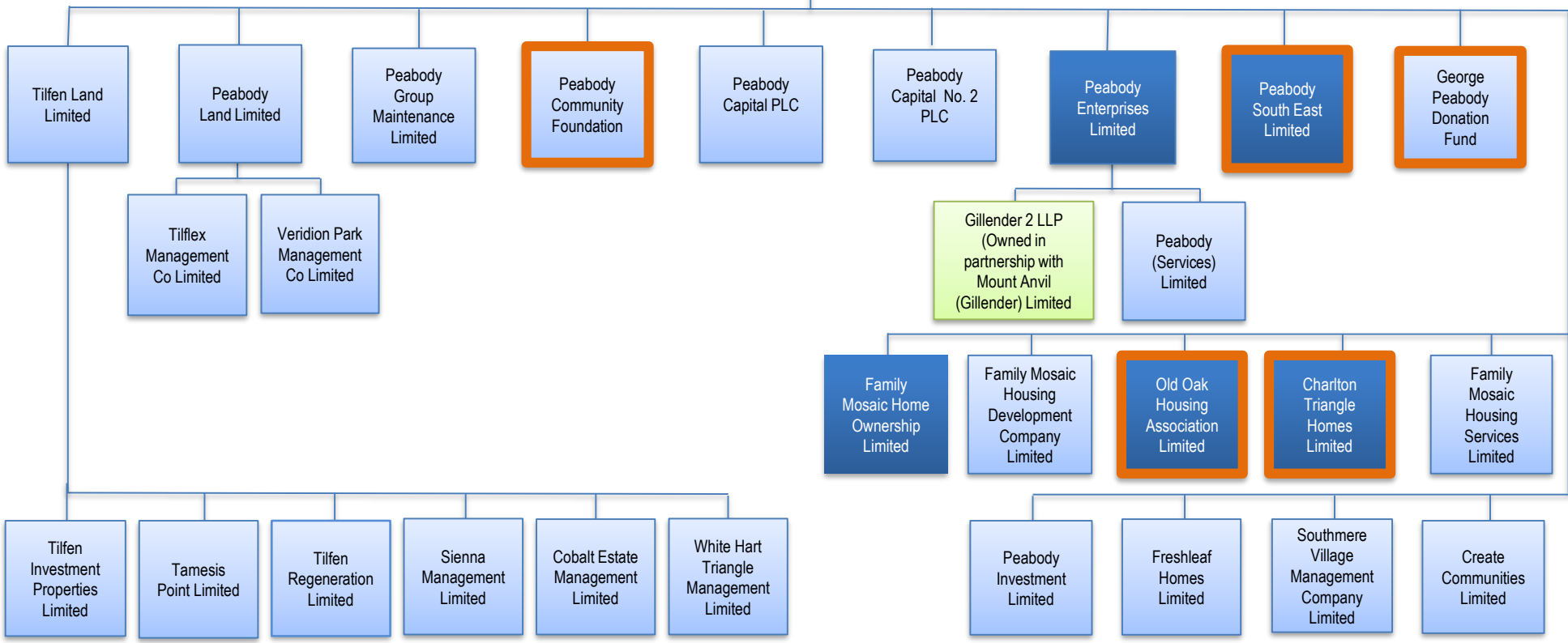


Peabody Group Governance Structure



Orange = Committee of the Board

Dark blue = Registered Provider

Orange outline = Charity (Registered or exempt)

Green = Joint Venture Limited Liability Partnership

Key:

1. Peabody Trust - Registered Provider, exempt charity and holding company for the Group, Community Benefit Society
2. Tilfen Land Limited - for profit company; commercial asset management in Thamesmead
3. Peabody Land Limited – for profit company; purchases and sells land
4. Peabody Group Maintenance Limited – in house maintenance contractor
5. Peabody Community Foundation – Group community investment and development vehicle; registered charity
6. Peabody Capital PLC – bond issue vehicle
7. Peabody Capital No.2 PLC – bond issue vehicle
8. Peabody Enterprises Limited – Community Benefit Society, registered provider and developer
9. George Peabody Donation Fund – registered charity (Formerly the Governors of the Peabody Trust) incorporated under statute
10. Family Mosaic Housing Development Company Limited – has been used to develop homes for sale as part of mixed tenure development schemes
11. Family Mosaic Home Ownership Limited – Community Benefit Society and Registered Provider, has been used to carry out mixed purpose developments
12. Family Mosaic Housing Services Limited – has been used to carry out construction and consultancy
13. Charlton Triangle Homes Limited – registered charity, company limited by guarantee and Registered Provider, which owns and manages around 1,200 homes in RB Greenwich
14. Peabody South East Limited – exempt charity and Community Benefit Society, Registered Provider to hold properties and conduct activities outside of London, formerly Gateway Sustainable Investments Limited
15. Peabody Investment Limited – dormant company
16. Freshleaf Homes Limited – former development company for Gallions
17. Southmere Village Management Limited – managing agent for Southmere Village development
18. Create Communities Limited – former VAT Company for Gallions; only retentions left with this subsidiary
19. Old Oak Housing Association Limited – Registered charity, company limited by guarantee and registered provider, which manages around 700 homes in the Old Oak estate, in LB Hammersmith and Fulham

Peabody Land Subsidiaries

20. Tilflex Management Company Limited – non-trading estate management company
21. Veridion Park Management Company Limited – non-trading commercial property management company

Peabody Enterprises Subsidiaries

22. Peabody (Services) Limited – for profit company, provides commercial activities, design and build services for development schemes

Tilfen Land Subsidiaries

23. Tilfen Investment Properties Limited – non-trading company, holds head lease for leasehold residential properties
24. Tamesis Point Limited – non-trading commercial property management company
25. Tilfen Regeneration Limited – non-trading company limited by guarantee, may be used in future for selected S106 developments
26. Sienna Management Limited – multi-occupancy building management company
27. Cobalt Estate Management Limited – multi-occupancy building management company
28. White Hart Triangle Management Limited – estate management company for White Hart Triangle

Limited Liability Partnerships

29. Gillender 2 LLP – Limited Liability Partnership, formed between Peabody Enterprises Limited and Mount Anvil (Gillender) Limited to undertake the Gillender 2 development scheme

In addition to these entities are a number of flat management companies which are largely autonomous but in which Peabody Group entities hold varying stakes.